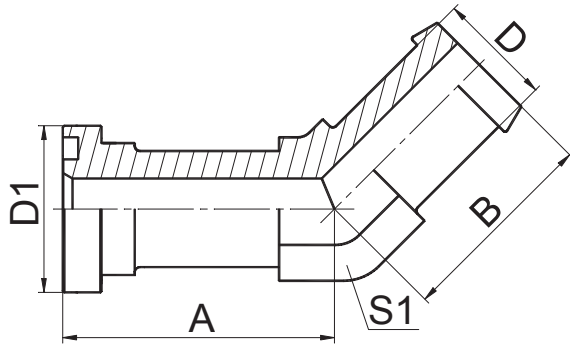




## SAE J1231接头 Beaded Adaptor

# 过渡接头 ADAPTER

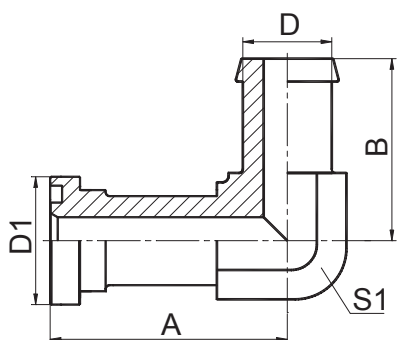


## 1FLX4-IN

45° SAE 法兰 3000PSI  
45° SAE FLANGE 3000PSI

代号 PART NO.	螺纹 THREAD		法兰型号	O 形圈	尺寸 DIMENSIONS					
		D	FLANGE SIZE	O RING	A	B	D1		S1	
1FLX4-16IN		1"	1"	32.92X3.53	47	46.5	44.4		33	
1FLX4-20-16IN		1"	1.1/4"	32.92X3.53	51.8	50	50.8		41	
1FLX4-20IN		1.1/4"	1.1/4"	37.69X3.53	51.8	50	50.8		41	
1FLX4-24-20IN		1.1/4"	1.1/2"	37.69X3.53	60.5	52.5	60.3		48	
1FLX4-24IN		1.1/2"	1.1/2"	47.22X3.53	60.5	57.5	60.3		48	
1FLX4-32-24IN		1.1/2"	2"	56.74X3.53	76.2	60	71.4		63	
1FLX4-32IN		2"	2"	56.74X3.53	76.2	64.5	71.4		63	

# 过渡接头 ADAPTER

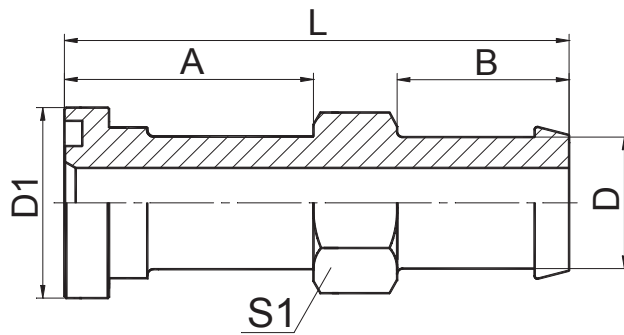


## 1FLX9-IN

90° SAE 法兰 3000PSI  
90° SAE FLANGE 3000PSI

代号 PART NO.	螺纹 THREAD		法兰型号	O 形圈	尺寸 DIMENSIONS					
		D	FLANGE SIZE	O RING	A	B	D1		S1	
1FLX9-16IN		1"	1"	32.92X3.53	60.2	57	44.4		33	
1FLX9-20-16IN		1"	1.1/4"	32.92X3.53	66.5	61.5	50.8		41	
1FLX9-20IN		1.1/4"	1.1/4"	37.69X3.53	66.5	61.5	50.8		41	
1FLX9-24-20IN		1.1/4"	1.1/2"	37.69X3.53	79.3	65.5	60.3		48	
1FLX9-24IN		1.1/2"	1.1/2"	47.22X3.53	79.3	70.5	60.3		48	
1FLX9-32-24IN		1.1/2"	2"	56.74X3.53	108	82.5	71.4		63	
1FLX9-32IN		2"	2"	56.74X3.53	108	87	71.4		63	

# 过渡接头 ADAPTER

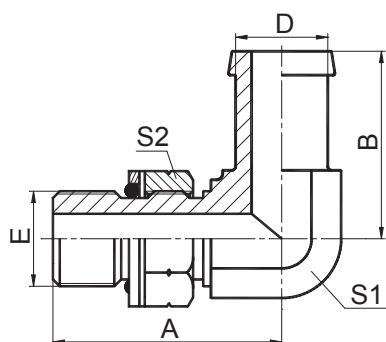


## 1FLX-IN

SAE 法兰 3000PSI  
SAE FLANGE 3000PSI

代号 PART NO.	螺纹 THREAD		法兰型号 FLANGE SIZE	O 形圈 O RING	尺寸 DIMENSIONS					
		D			A	B	D1	L	S1	
1FLX-16IN		1"	1"	32.92X3.53	34	35	44.4	79	27	
1FLX-20-16IN		1"	1.1/4"	32.92X3.53	37	35	50.8	82	27	
1FLX-20IN		1.1/4"	1.1/4"	37.69X3.53	37	35	50.8	83	36	
1FLX-24-20IN		1.1/4"	1.1/2"	37.69X3.53	42	35	60.3	88	36	
1FLX-24IN		1.1/2"	1.1/2"	47.22X3.53	42	40	60.3	95	41	
1FLX-32-24IN		1.1/2"	2"	56.74X3.53	55	40	71.4	108	41	
1FLX-32IN		2"	2"	56.74X3.53	55	44.5	71.4	114.5	55	
1FLX-40-32IN		2"	2.1/2"	69.44X3.53	60	44.5	84.1	119.5	55	
1FLX-40IN		2.1/2"	2.1/2"	69.44X3.53	60	50	84.1	127	65	

# 过渡接头 ADAPTER



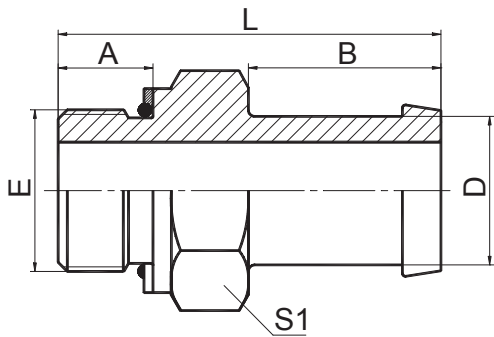
## 1GX9-OG(IN)

90° 英管外螺纹带 O 形圈

90° BSP O-RING BOSS

代号 PART NO.	螺纹 THREAD		O 形圈 O-ROG(IN)G		尺寸 DIMENSIONS				
	E	D	E 端		A	B		S1	
1GX9-12OG(IN)	G3/4"X14	3/4"	23.47X2.62		50.5	46		27	
1GX9-12-16OG(IN)	G3/4"X14	1"	23.47X2.62		50.5	53		27	
1GX9-16OG(IN)	G1"X11	1"	29.74X3.53		54.5	56.5		33	
1GX9-16-20OG(IN)	G1"X11	1.1/4"	29.74X3.53		54.5	56.5		33	
1GX9-20OG(IN)	G1.1/4"X11	1.1/4"	37.69X3.53		58	61		41	
1GX9-20-24OG(IN)	G1.1/4"X11	1.1/2"	37.69X3.53		58	66.5		41	
1GX9-24-20OG(IN)	G1.1/2"X11	1.1/4"	44.04X3.53		63	66		48	
1GX9-24OG(IN)	G1.1/2"X11	1.1/2"	44.04X3.53		63	71		48	

# 过渡接头 ADAPTER

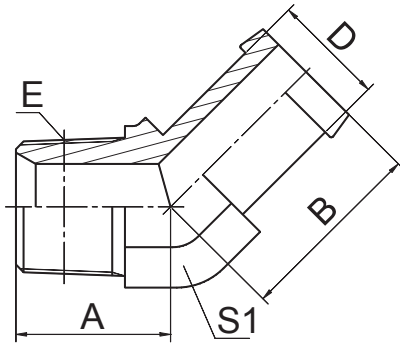


## 1GX-IN

英管外螺纹带 O 形圈  
BSP O-RING BOSS

代号 PART NO.	螺纹 THREAD		O 形圈 O-RING		尺寸 DIMENSIONS				
	E	D	E 端		A	B	L	S1	
1GX-12IN	G3/4"X14	3/4"	23.47X2.62		15.5	28	57.5	32	
1GX-12-16IN	G3/4"X14	1"	23.47X2.62		15.5	35	64.5	32	
1GX-16IN	G1"X11	1"	29.74X3.53		18	35	69	41	
1GX-20-12IN	G1.1/4"X11	3/4"	37.69X3.53		20	28	66	50	
1GX-20-16IN	G1.1/4"X11	1"	37.69X3.53		20	35	73	50	
1GX-20IN	G1.1/4"X11	1.1/4"	37.69X3.53		20	35	73	50	
1GX-20-24IN	G1.1/4"X11	1.1/2"	37.69X3.53		20	40	78	50	
1GX-24-16IN	G1.1/2"X11	1"	44.04X3.53		21.5	35	74.5	55	
1GX-24-20IN	G1.1/2"X11	1.1/4"	44.04X3.53		21.5	35	74.5	55	
1GX-24IN	G1.1/2"X11	1.1/2"	44.04X3.53		21.5	40	79.5	55	

# 过渡接头 ADAPTER

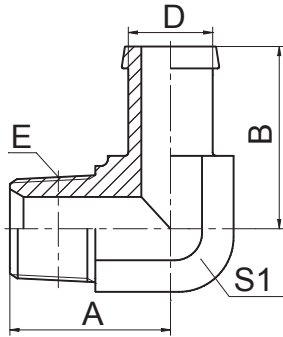


## 1NX4-IN

45° 布锥管外螺纹  
45° NPT MALE

代号 PART NO.	螺纹 THREAD	D	尺寸 DIMENSION			
	E		A	B	S1	
1NX4-02-04IN	Z1/8"X27	1/4"	17	33	11	
1NX4-02-05IN	Z1/8"X27	5/16"	17	33	11	
1NX4-04IN	Z1/4"X18	1/4"	21	34	14	
1NX4-04-06IN	Z1/4"X18	3/8"	21	34	14	
1NX4-04-08IN	Z1/4"X18	1/2"	21	34	14	
1NX4-06IN	Z3/8"X18	3/8"	24	35	19	
1NX4-06-08IN	Z3/8"X18	1/2"	24	35	19	
1NX4-06-10IN	Z3/8"X18	5/8"	24	35	19	
1NX4-06-12IN	Z3/8"X18	3/4"	26	36	22	
1NX4-08IN	Z1/2"X14	1/2"	29.5	36	22	
1NX4-08-06IN	Z1/2"X14	3/8"	29.5	36	22	
1NX4-08-10IN	Z1/2"X14	5/8"	29.5	36	22	
1NX4-08-12IN	Z1/2"X14	3/4"	29.5	36	22	
1NX4-08-16IN	Z1/2"X14	1"	31	44.5	27	
1NX4-12IN	Z3/4"X14	3/4"	35	37.5	27	
1NX4-12-10IN	Z3/4"X14	5/8"	35	37.5	27	
1NX4-12-16IN	Z3/4"X14	1"	35	44.5	27	
1NX4-16IN	Z1"X11.5	1"	39	46	33	
1NX4-16-12IN	Z1"X11.5	3/4"	39	39	33	
1NX4-16-20IN	Z1"X11.5	1.1/4"	39	46	33	
1NX4-20IN	Z1.1/4"X11.5	1.1/4"	42.5	49.5	41	
1NX4-20-16IN	Z1.1/4"X11.5	1"	42.5	49.5	41	
1NX4-20-24IN	Z1.1/4"X11.5	1.1/2"	42.5	54.5	41	
1NX4-24IN	Z1.1/2"X11.5	1.1/2"	45	57	48	
1NX4-32IN	Z2"X11.5	2"	50	67.5	63	

# 过渡接头 ADAPTER



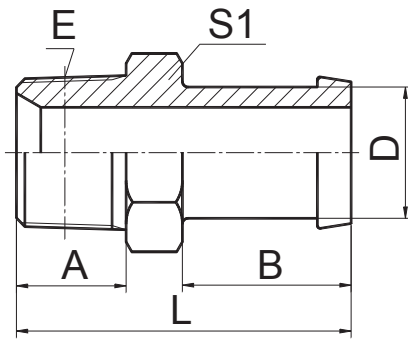
## 1NX9-IN

90° 布锥管外螺纹  
90° NPT MALE

代号 PART NO.	螺纹 THREAD		尺寸 DIMENSION			
	E	D	A	B	S1	
1NX9-02-04IN	Z1/8"X27	1/4"	21	36	11	
1NX9-02-05IN	Z1/8"X27	5/16"	21	36	11	
1NX9-04IN	Z1/4"X18	1/4"	25.5	38.5	14	
1NX9-04-06IN	Z1/4"X18	3/8"	25.5	38.5	14	
1NX9-04-08IN	Z1/4"X18	1/2"	25.5	38.5	14	
1NX9-06IN	Z3/8"X18	3/8"	31	40.5	19	
1NX9-06-08IN	Z3/8"X18	1/2"	31	40.5	19	
1NX9-06-10IN	Z3/8"X18	5/8"	31	40.5	19	
1NX9-06-12IN	Z3/8"X18	3/4"	31	41	19	
1NX9-08IN	Z1/2"X14	1/2"	36.7	43	22	
1NX9-08-06IN	Z1/2"X14	3/8"	36.7	43	22	
1NX9-08-10IN	Z1/2"X14	5/8"	36.7	43	22	
1NX9-08-12IN	Z1/2"X14	3/4"	37.3	43	22	
1NX9-08-16IN	Z1/2"X14	1"	40	53.5	27	
1NX9-12IN	Z3/4"X14	3/4"	44	46.5	27	
1NX9-12-08IN	Z3/4"X14	1/2"	44	46.5	27	
1NX9-12-10IN	Z3/4"X14	5/8"	44	46.5	27	
1NX9-12-16IN	Z3/4"X14	1"	44	53.5	27	
1NX9-16IN	Z1"X11.5	1"	50	57	33	
1NX9-16-12IN	Z1"X11.5	3/4"	50	50	33	
1NX9-16-20IN	Z1"X11.5	1.1/4"	50	57	33	
1NX9-16-24IN	Z1"X11.5	1.1/2"	54.5	66.5	41	
1NX9-20IN	Z1.1/4"X11.5	1.1/4"	54.5	61.5	41	
1NX9-20-16IN	Z1.1/4"X11.5	1"	54.5	61.5	41	
1NX9-20-24IN	Z1.1/4"X11.5	1.1/2"	54.5	66.5	41	
1NX9-24IN	Z1.1/2"X11.5	1.1/2"	59.5	74.5	48	
1NX9-24-20IN	Z1.1/2"X11.5	1.1/4"	59.5	70.5	48	
1NX9-32IN	Z2"X11.5	2"	67.5	82	63	



# 过渡接头 ADAPTER

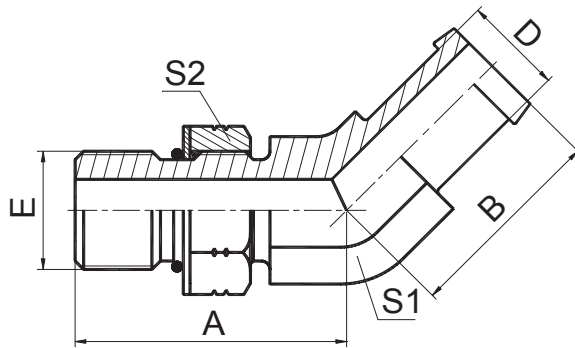


## 1NX-IN

布锥管外螺纹  
NPT MALE

代号 PART NO.	螺纹 THREAD	D	尺寸 DIMENSION			
	E		A	B	L	S1
1NX-02-04IN	Z1/8"X27	1/4"	10.5	28	44.5	12
1NX-02-05IN	Z1/8"X27	5/16"	10.5	28	44.5	12
1NX-04IN	Z1/4"X18	1/4"	15	28	49	17
1NX-04-06IN	Z1/4"X18	3/8"	15	28	49	17
1NX-04-08IN	Z1/4"X18	1/2"	15	28	49	17
1NX-06IN	Z3/8"X18	3/8"	16	28	50	19
1NX-06-08IN	Z3/8"X18	1/2"	16	28	50	19
1NX-06-10IN	Z3/8"X18	5/8"	16	28	50	19
1NX-06-12IN	Z3/8"X18	3/4"	16	28	52	22
1NX-08IN	Z1/2"X14	1/2"	19.5	28	55.5	22
1NX-08-10IN	Z1/2"X14	5/8"	19.5	28	55.5	22
1NX-08-12IN	Z1/2"X14	3/4"	19.5	28	55.5	22
1NX-12IN	Z3/4"X14	3/4"	19.5	28	57.5	30
1NX-12-08IN	Z3/4"X14	1/2"	19.5	28	57.5	30
1NX-12-10IN	Z3/4"X14	5/8"	19.5	28	57.5	30
1NX-12-16IN	Z3/4"X14	1"	19.5	35	64.5	30
1NX-12-20IN	Z3/4"X14	1.1/4"	19.5	35	65.5	36
1NX-16IN	Z1"X11.5	1"	25.5	35	71.5	36
1NX-16-12IN	Z1"X11.5	3/4"	25.5	28	64.5	36
1NX-16-20IN	Z1"X11.5	1.1/4"	25.5	35	70.5	36
1NX-20-12IN	Z1.1/4"X11.5	3/4"	26.5	28	67.5	46
1NX-20-16IN	Z1.1/4"X11.5	1"	26.5	35	74.5	46
1NX-20IN	Z1.1/4"X11.5	1.1/4"	26.5	35	74.5	46
1NX-20-24IN	Z1.1/4"X11.5	1.1/2"	26.5	40	79.5	46
1NX-24IN	Z1.1/2"X11.5	1.1/2"	27.5	40	82.5	50
1NX-32IN	Z2"X11.5	2"	27.5	44.5	89	65

# 过渡接头 ADAPTER

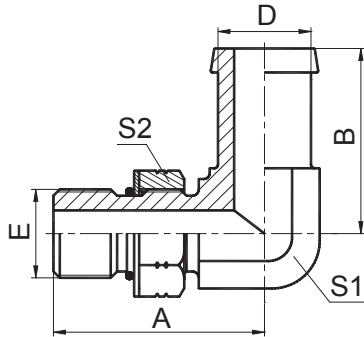


## 1OX4-OG(IN)

45° SAE 外螺纹带 O 形圈  
45° SAE O-RING BOSS

代号 PART NO.	螺纹 THREAD		O 形圈 O-ROG(IN)G		尺寸 DIMENSIONS			
	E	D	E 端		A	B	S1	
1OX4-04OG(IN)	7/16"X20	1/4"	8.92X1.83		24	33	11	
1OX4-06OG(IN)	9/16"X18	3/8"	11.89X1.98		27.5	34	14	
1OX4-08OG(IN)	3/4"X16	1/2"	16.36X2.21		31.5	35	19	
1OX4-08-10OG(IN)	3/4"X16	5/8"	16.36X2.21		31.5	35	19	
1OX4-08-12OG(IN)	3/4"X16	3/4"	16.36X2.21		37	36	22	
1OX4-10OG(IN)	7/8"X14	5/8"	19.18X2.46		38.5	36	22	
1OX4-10-12OG(IN)	7/8"X14	3/4"	19.18X2.46		38.5	36	22	
1OX4-12OG(IN)	1.1/16"X12	3/4"	23.47X2.95		43.5	37	27	
1OX4-12-10OG(IN)	1.1/16"X12	5/8"	23.47X2.95		43.5	37	27	
1OX4-12-16OG(IN)	1.1/16"X12	1"	23.47X2.95		43.5	44	27	
1OX4-14-16OG(IN)	1.3/16"X12	1"	26.62X2.95		44	44.5	30	
1OX4-16OG(IN)	1.5/16"X12	1"	29.74X2.95		44.5	45.5	33	
1OX4-16-20OG(IN)	1.5/16"X12	1.1/4"	29.74X2.95		44.5	45.5	33	
1OX4-20OG(IN)	1.5/8"X12	1.1/4"	37.46X3.00		48.5	49.5	41	
1OX4-20-24OG(IN)	1.5/8"X12	1.1/2"	37.46X3.00		48.5	54.5	41	
1OX4-24OG(IN)	1.7/8"X12	1.1/2"	43.69X3.00		51	57	48	

# 过渡接头 ADAPTER

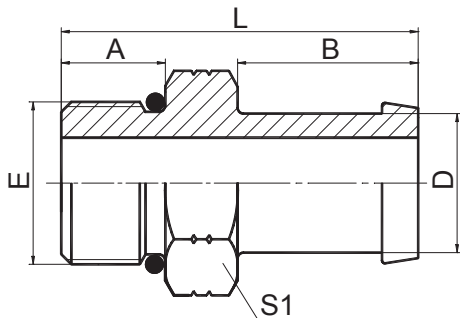


## 10X9-OG(IN)

90° SAE 外螺纹带 O 形圈  
90° SAE O-RING BOSS

代号 PART NO.	螺纹 THREAD		O 形圈 O-ROG(IN)G		尺寸 DIMENSIONS			
	E	D	E 端		A	B	S1	
10X9-04OG(IN)	7/16"X20	1/4"	8.92X1.83		27.2	36	11	
10X9-04-05OG(IN)	7/16"X20	5/16"	8.92X1.83		27.2	36	11	
10X9-06OG(IN)	9/16"X18	3/8"	11.89X1.98		31.8	38.5	14	
10X9-06-04OG(IN)	9/16"X18	1/4"	11.89X1.98		31.8	38.5	14	
10X9-06-08OG(IN)	9/16"X18	1/2"	11.89X1.98		31.8	38.5	14	
10X9-08OG(IN)	3/4"X16	1/2"	16.36X2.21		37.5	41	19	
10X9-08-06OG(IN)	3/4"X16	3/8"	16.36X2.21		37.5	41	19	
10X9-08-10OG(IN)	3/4"X16	5/8"	16.36X2.21		37.5	41	19	
10X9-08-12OG(IN)	3/4"X16	3/4"	16.36X2.21		39.5	43	22	
10X9-08-16OG(IN)	3/4"X16	1"	16.36X2.21		43	46	27	
10X9-10OG(IN)	7/8"X14	5/8"	19.18X2.46		45	43	22	
10X9-10-12OG(IN)	7/8"X14	3/4"	19.18X2.46		45	43	22	
10X9-10-16OG(IN)	7/8"X14	1"	19.18X2.46		49	53.5	27	
10X9-12OG(IN)	1.1/16"X12	3/4"	23.47X2.95		51	46	27	
10X9-12-10OG(IN)	1.1/16"X12	5/8"	23.47X2.95		51	46	27	
10X9-12-16OG(IN)	1.1/16"X12	1"	23.47X2.95		51	53	27	
10X9-12-20OG(IN)	1.1/16"X12	1.1/4"	23.47X2.95		54.5	56.5	33	
10X9-14-16OG(IN)	1.3/16"X12	1"	26.62X2.95		53.5	54.5	30	
10X9-14-20OG(IN)	1.3/16"X12	1.1/4"	26.62X2.95		54.5	56.5	33	
10X9-16OG(IN)	1.5/16"X12	1"	29.74X2.95		54.5	56.5	33	
10X9-16-12OG(IN)	1.5/16"X12	3/4"	29.74X2.95		54.5	49.5	33	
10X9-16-20OG(IN)	1.5/16"X12	1.1/4"	29.74X2.95		54.5	56.5	33	
10X9-16-24OG(IN)	1.5/16"X12	1.1/2"	29.74X2.95		60	66.5	41	
10X9-20OG(IN)	1.5/8"X12	1.1/4"	37.46X3.00		59.5	61	41	
10X9-20-16OG(IN)	1.5/8"X12	1"	37.46X3.00		59.5	61	41	
10X9-20-24OG(IN)	1.5/8"X12	1.1/2"	37.46X3.00		59.5	66.5	41	
10X9-24OG(IN)	1.7/8"X12	1.1/2"	43.69X3.00		63	71	48	
10X9-24-16OG(IN)	1.7/8"X12	1"	43.69X3.00		63	65.5	48	
10X9-24-20OG(IN)	1.7/8"X12	1.1/4"	43.69X3.00		63	65.5	48	
10X9-32OG(IN)	2.1/2"X12	2"	59.36X3.00		77	87.5	63	

# 过渡接头 ADAPTER

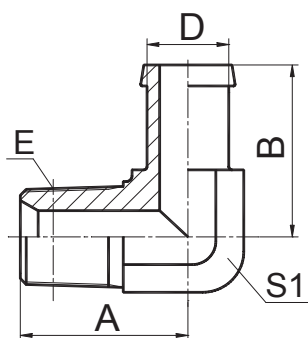


## 10X-IN

SAE 外螺纹带 O 形圈  
SAE O-RING BOSS

代号 PART NO.	螺纹 THREAD		O 形圈 O-RING		尺寸 DIMENSIONS				
	E	D	E 端		A	B	L	S1	
10X-04IN	7/16"X20	1/4"	8.92X1.83		7.5	28	41.5	14	
10X-04-06IN	7/16"X20	3/8"	8.92X1.83		7.5	28	41.5	14	
10X-05IN	1/2"X20	5/16"	10.52X1.83		9.1	28	43	17	
10X-06IN	9/16"X18	3/8"	11.89X1.98		9.9	28	44	17	
10X-06-04IN	9/16"X18	1/4"	11.89X1.98		9.9	28	44	17	
10X-06-08IN	9/16"X18	1/2"	11.89X1.98		9.9	28	44	17	
10X-08IN	3/4"X16	1/2"	16.36X2.21		11.1	28	47	22	
10X-08-10IN	3/4"X16	5/8"	16.36X2.21		11.1	28	47	22	
10X-08-12IN	3/4"X16	3/4"	16.36X2.21		11.1	28	47	22	
10X-10IN	7/8"X14	5/8"	19.18X2.46		12.7	28	50.5	27	
10X-10-12IN	7/8"X14	3/4"	19.18X2.46		12.7	28	50.5	27	
10X-10-16IN	7/8"X14	1"	19.18X2.46		12.7	35	58.5	32	
10X-10-20IN	7/8"X14	1.1/4"	19.18X2.46		12.7	35	58.5	36	
10X-12IN	1.1/16"X12	3/4"	23.47X2.95		15.1	28	54	32	
10X-12-08IN	1.1/16"X12	1/2"	23.47X2.95		15.1	28	54	32	
10X-12-10IN	1.1/16"X12	5/8"	23.47X2.95		15.1	28	54	32	
10X-12-16IN	1.1/16"X12	1"	23.47X2.95		15.1	35	61	32	
10X-12-20IN	1.1/16"X12	1.1/4"	23.47X2.95		15.1	35	61	36	
10X-12-24IN	1.1/16"X12	1.1/2"	23.47X2.95		15.1	40	68	41	
10X-14-20IN	1.3/16"X12	1.1/4"	26.62X2.95		15.1	35	61	36	
10X-16-12IN	1.5/16"X12	3/4"	29.74X2.95		15.1	28	54	38	
10X-16IN	1.5/16"X12	1"	29.74X2.95		15.1	35	61	38	
10X-16-20IN	1.5/16"X12	1.1/4"	29.74X2.95		15.1	35	61	38	
10X-16-24IN	1.5/16"X12	1.1/2"	29.74X2.95		15.1	40	68	41	
10X-20IN	1.5/8"X12	1.1/4"	37.46X3.00		15.1	35	65	50	
10X-20-24IN	1.5/8"X12	1.1/2"	37.46X3.00		15.1	40	70	50	
10X-24IN	1.7/8"X12	1.1/2"	43.69X3.00		15.1	40	70	55	
10X-24-20IN	1.7/8"X12	1.1/4"	43.69X3.00		15.1	35	65	55	
10X-24-32IN	1.7/8"X12	2"	43.69X3.00		15.1	44.5	74.5	55	
10X-32IN	2.1/2"X12	2"	59.36X3.00		15.1	44.5	76.5	70	

# 过渡接头 ADAPTER

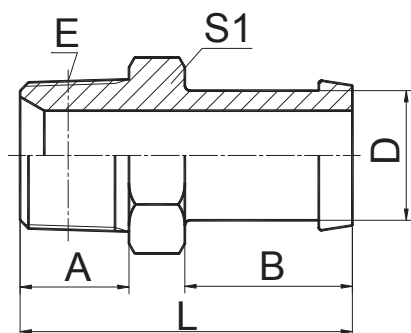


## 1TX9-SP(IN)

90° 英锥管外螺纹  
90° BSPT MALE

代号 PART NO.	螺纹 THREAD	尺寸 DIMENSION					
	E	D	A	B	S1		
1TX9-08-12SP(IN)	R1/2"X14	3/4"	36	43	22		
1TX9-12SP(IN)	R3/4"X14	3/4"	43.5	46	27		
1TX9-12-16SP(IN)	R3/4"X14	1"	43.5	53	27		
1TX9-16SP(IN)	R1"X11	1"	50	56.5	33		
1TX9-16-20SP(IN)	R1"X11	1.1/4"	50	56.5	33		
1TX9-20-12SP(IN)	R1.1/4"X11	3/4"	56.5	54	41		
1TX9-20-16SP(IN)	R1.1/4"X11	1"	56.5	61	41		
1TX9-20SP(IN)	R1.1/4"X11	1.1/4"	56.5	61	41		
1TX9-24-16SP(IN)	R1.1/2"X11	1"	62.5	66	48		
1TX9-24-20SP(IN)	R1.1/2"X11	1.1/4"	62.5	66	48		
1TX9-24SP(IN)	R1.1/2"X11	1.1/2"	62.5	71	48		
1TX9-32-24SP(IN)	R2"X11	1.1/2"	68	81	63		
1TX9-32SP(IN)	R2"X11	2"	68	85.5	63		

# 过渡接头 ADAPTER

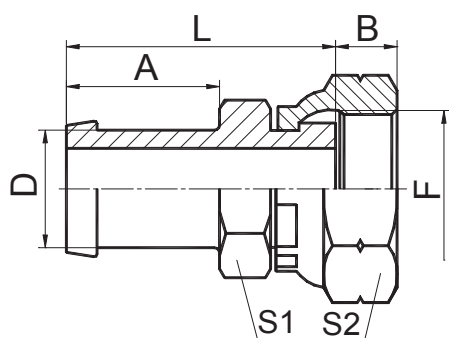


## 1TX-SP(IN)

英锥管外螺纹  
BSPT MALE

代号 PART NO.	螺纹 THREAD	尺寸 DIMENSION					
	E	D	A	B	L	S1	
1TX-06-12SP(IN)	R3/8"X19	3/4"	15	28	51	22	
1TX-08-12SP(IN)	R1/2"X14	3/4"	20	28	56	22	
1TX-12SP(IN)	R3/4"X14	3/4"	20	28	58	27	
1TX-12-16SP(IN)	R3/4"X14	1"	20	35	65	30	
1TX-16-12SP(IN)	R1"X11	3/4"	25.5	28	64.5	36	
1TX-16SP(IN)	R1"X11	1"	25.5	35	71.5	36	
1TX-16-20SP(IN)	R1"X11	1.1/4"	25.5	35	71.5	36	
1TX-16-24SP(IN)	R1"X11	1.1/2"	25.5	40	78.5	41	
1TX-20-12SP(IN)	R1.1/4"X11	3/4"	26.5	28	67.5	46	
1TX-20-16SP(IN)	R1.1/4"X11	1"	26.5	35	74.5	46	
1TX-20SP(IN)	R1.1/4"X11	1.1/4"	26.5	35	74.5	46	
1TX-20-24SP(IN)	R1.1/4"X11	1.1/2"	26.5	40	79.5	46	
1TX-24-16SP(IN)	R1.1/2"X11	1"	26.5	35	76.5	50	
1TX-24-20SP(IN)	R1.1/2"X11	1.1/4"	26.5	35	76.5	50	
1TX-24SP(IN)	R1.1/2"X11	1.1/2"	26.5	40	81.5	50	
1TX-32-16SP(IN)	R2"X11	1"	30	35	82	65	
1TX-32-20SP(IN)	R2"X11	1.1/4"	30	35	82	65	
1TX-32-24SP(IN)	R2"X11	1.1/2"	30	40	87	65	
1TX-32SP(IN)	R2"X11	2"	30	44.5	91.5	65	

# 过渡接头 ADAPTER

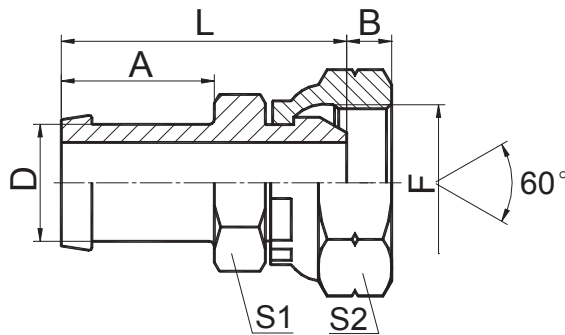


## 2XB-FIN

英管内螺纹平面  
BSP FEMALE FLAT

代号 PART NO.	螺纹 THREAD		尺寸 DIMENSIONS						
	E	F			A	B	L	S1	S2
2XB-12FIN	3/4"	G3/4"X14			28	13.5	50.5	27	41
2XB-16FIN	1"	G1"X11			35	15.5	58.5	32	41
2XB-20FIN	1.1/4"	G1.1/4"X11			35	15.5	63	41	50
2XB-24FIN	1.1/2"	G1.1/2"X11			40	17.5	68.5	46	55

# 过渡接头 ADAPTER



## 2XB-IN

英管内螺纹 60° 外锥  
BSP FEMALE 60° CONE

代号 PART NO.	螺纹 THREAD		尺寸 DIMENSIONS					
	E	F	A	B	L	S1	S2	
2XB-12IN	3/4"	G3/4"X14	28	11.7	43	27	41	
2XB-16IN	1"	G1"X11	35	11.7	62	32	41	
2XB-20IN	1.1/4"	G1.1/4"X11	35	11	68	41	50	
2XB-24IN	1.1/2"	G1.1/2"X11	40	13	73	46	55	
2XB-32IN	2"	G2"X11	44.5	20	80.5	60	70	